

**Skeletal System-Thorax***Thorax*

- ♦ Skeleton of the chest is important to respiration and guarding significant organs from injury. Consists of 12 ribs (7 true, 5 false-2 floating)

*Attachments*

- ♦ Ribs attach anteriorly to the Manubrium, Body through costal cartilage
- ♦ Posteriorly the ribs attach to the thoracic vertebrae
- ♦ Inferiorly the ribs are sealed by the diaphragm

*True Ribs*

- ♦ Ribs (1-7) articulate directly with the sternum

*False Ribs*

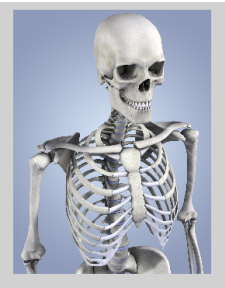
- ♦ Ribs (8-10) articulate indirectly with the sternum with individual cartilage articulating with the costal cartilage of the 7<sup>th</sup> rib

*Floating Ribs*

- ♦ Ribs 11-12 end in the abdominal wall  
(no anterior attachments)

Sep 9-1:56 PM

Sep 9-1:58 PM



Dec 1-8:08 AM